



EC Centrifugal Fan-A2 Airfoil Backward Curved Φ355

Creation date: 2024-03-16

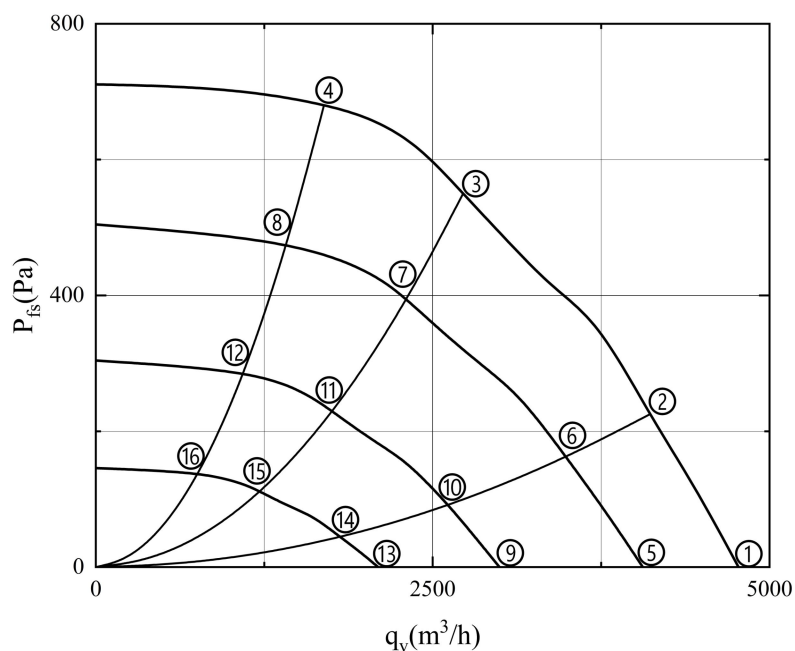
额定数据 Nominal data

型号 Type	EC102/50E3G01-B355/110A2-01-Z	
相位 Phase	1~	
额定电压 Rated voltage	VAC	230
电压范围 Rated voltage range	VAC	200 ~ 277
频率 Frequency	Hz	50/60
转速 Speed (rpm)	min ⁻¹	1880
功率 Power consumption	W	650
电流 Current	A	2.8
最低环境温度 Min. ambient temperature	°C	-25
最高环境温度 Max. ambient temperature	°C	50

ErP 能效数据 ErP Energy efficiency data

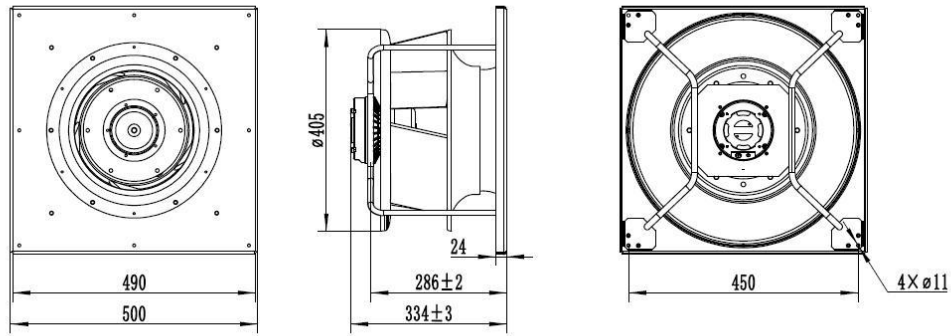
		实际 Actual	规定 2015 Req. 2015
整体效率 η_{es} Overall efficiency	%	70.5	49.5
测量类别 Measurement category		A	
效率类别 Efficiency category		静态 Static	
效率等级 N Efficiency grade N		83	62
转速调节 Variable speed drive		是 Yes	

特性曲线及数据 Characteristic curve and data

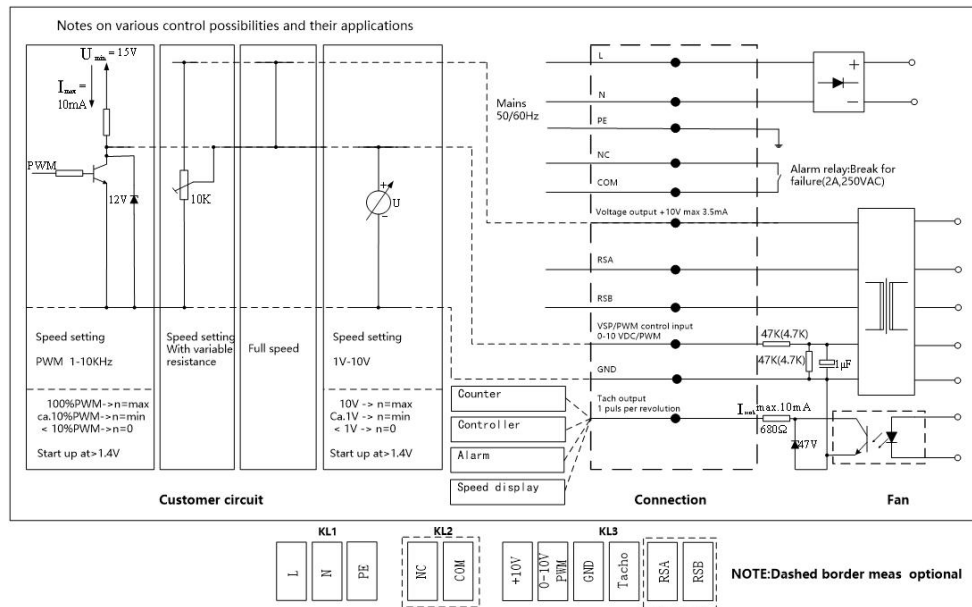


	电压	频率	转速	功率	电流	噪声	风量	静压	风量
	U	f	n	P _{ed}	I	L _p	q _v	p _{fs}	q _v
	V	Hz	min ⁻¹	W	A	dB(A)	m ³ /h	Pa	cfm
1	230	50	1880	438	1.9	78	4770	0	2808
2	230	50	1880	578	2.5	73	4115	225	2422
3	230	50	1880	650	2.8	71	2726	550	1604
4	230	50	1880	583	2.6	73	1693	680	996
5	230	50	1600	270	0.2	72	4060	0	2389
6	230	50	1600	356	1.6	68	3487	163	2052
7	230	50	1600	401	1.7	65	2304	395	1356
8	230	50	1600	359	1.6	67	1427	482	840
9	230	50	1230	123	0.5	66	2996	0	1763
10	230	50	1230	162	0.7	63	2611	93	1537
11	230	50	1230	182	0.8	59	1751	230	1031
12	230	50	1230	163	0.7	63	1096	290	645
13	230	50	860	42	0.2	60	2095	0	1233
14	230	50	860	55	0.2	59	1809	45	1065
15	230	50	860	62	0.3	55	1212	112	713
16	230	50	860	56	0.2	57	755	140	444

产品图纸 Product drawing



线路图 Connection diagram



Terminal	NO.	Connection	Function
KL1	1	L	电源相线, 电压范围见铭牌 Power supply, phase, voltage range see nameplate
	2	N	电源相线, 电压范围见铭牌 Power supply, phase, voltage range see nameplate
	3	PE	保护接地 Protective earth
KL2	1	NC	状态继电器, 浮动状态触点, 故障或断电后断开 Status relay, floating status contact, break for failure
	2	COM	状态继电器, 浮动状态触点, 触点额定值 250VAC/2A (AC1) 最小 10mA Status relay, contact rating 250VAC/2A(AC1) min. 10mA
KL3	1	+10V/max.3.5mA	电压输出, 给外部设备提供电源 Voltage output, power supply for ext. device
	2	0-10V/PWM	控制 0~10V 或 PWM 输入, 内部阻抗为 100K Control input 0-10V or PWM, impedance 100K
	3	GND	控制接口部分参考地 Reference ground for control interface
	4	Tacho	输出: 1 脉冲/每转 Tach output: 1 pulse/revolution
	5	RSA	MODBUS 的 RS485 接口 A RS485 interface for MODBUS, RSA
	6	RSB	MODBUS 的 RS485 接口 B RS485 interface for MODBUS, RSB